

**BRIAN JAMES TRAILERS**

» Connected to you



## RACE SPORT

Inspired functionality

UNITED KINGDOM

**RACE**SPORT



## RACE SPORT

Enclosed transport, realised

5

5 YEAR  
CHASSIS  
WARRANTY



Enclosed trailer transportation is a well understood and valued concept, proven by its growing popularity. Preservation and security are the concept highlights. In addition removing potentially valuable assets from public view is also considered essential for many.

Pioneering production methods continue to develop at Brian James Trailers, since our original brand new concepts released in 1995. Over twenty years on, we now return to the original principles of creating extraordinary value for money, combined with competent engineering based on a standard production chassis. The **Race Sport** design process perfectly embodied all these objectives, achieving an outstanding result. Quality and innovation are highly evident, while at the same time value for money achieves best in market.



RACE SPORT



## RACE SPORT

### Standard features.

A real advantage is obtained by starting with perhaps the best standard car transporter available in Europe today. Race Sport chassis is a very close relation to the A4 Transporter, with many significant features being carried over entirely. Preserved is the low weight, high strength steel chassis with a 2.0m load area width and low mudguard clearance heights as well as the fully punched deck providing a superior vehicle restraint option in the form of adjustable wheel chocks and circumference wheel strapping.

To create the appealing and practical Race Sport aesthetics, Brian James Trailers have engineered a fully CNC machined GRP composite panel and high specification GRP body mouldings. Also incorporated are features unavailable at this price level elsewhere, such as a full length daylight roof, from clear gel GRP.

- **Large 'Gullwing' side access doors**  
provide a wide practical access to vehicles,  
from both sides of the trailer. (2.17m wide).



- **Front access hatches** on both left and right sides.  
(Dimensions: 0.85m (H) x 0.5m (W) on 4.5m and 5.0m bed lengths, 1.25m (H) x 0.5m (W) on 5.5m bed length).



- **LED marker lamps**  
LED technology, super-bright and reliable lamps are fitted on front (white), sides (amber) and rear outline positions (red/white), as well as registration plate illumination.





#### ● Multiple anchor points

Chassis located strap attachment points are provided along each side of a Race Sport trailer. A high level of grip and strength is offered by the raised, punched profile of each slot.



#### ● Super-Structure

Lighter weight and improved strength, combined with the durability of a hot-dip galvanised chassis is provided by extensive use of specially formulated high tensile steel.



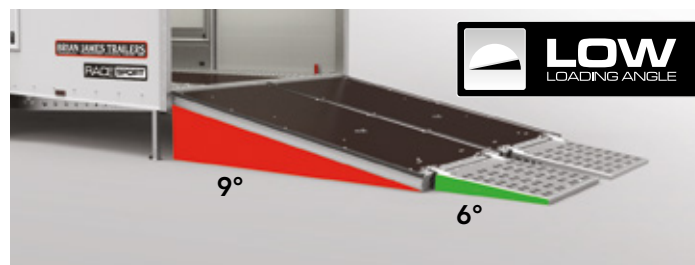
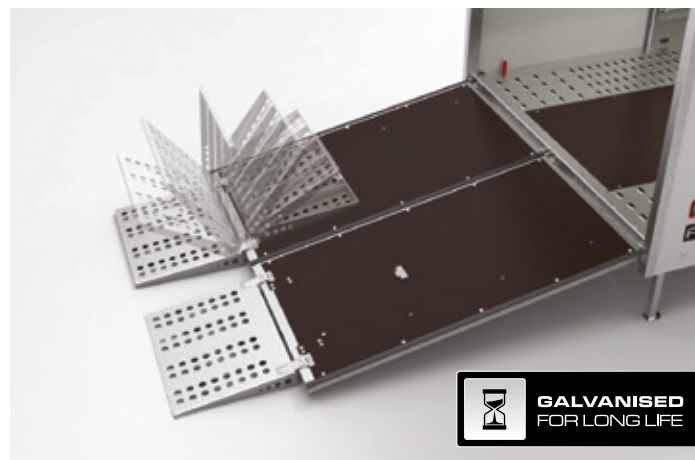
#### ● Individual lamp array

Stylish, well protected lamps are individually replaceable in the unlikely event of damage. They feature a high quality, automotive bulb holder providing durability and a convenient twist release mechanism for easy bulb access.



#### ● Rear doors

Race Sport rear doors are designed as a combined door and ramp system. Each door can be lowered individually, with gas spring assistance requiring minimum effort.



#### ● Rear support stands

Rear stands provide support when loading from the rear.

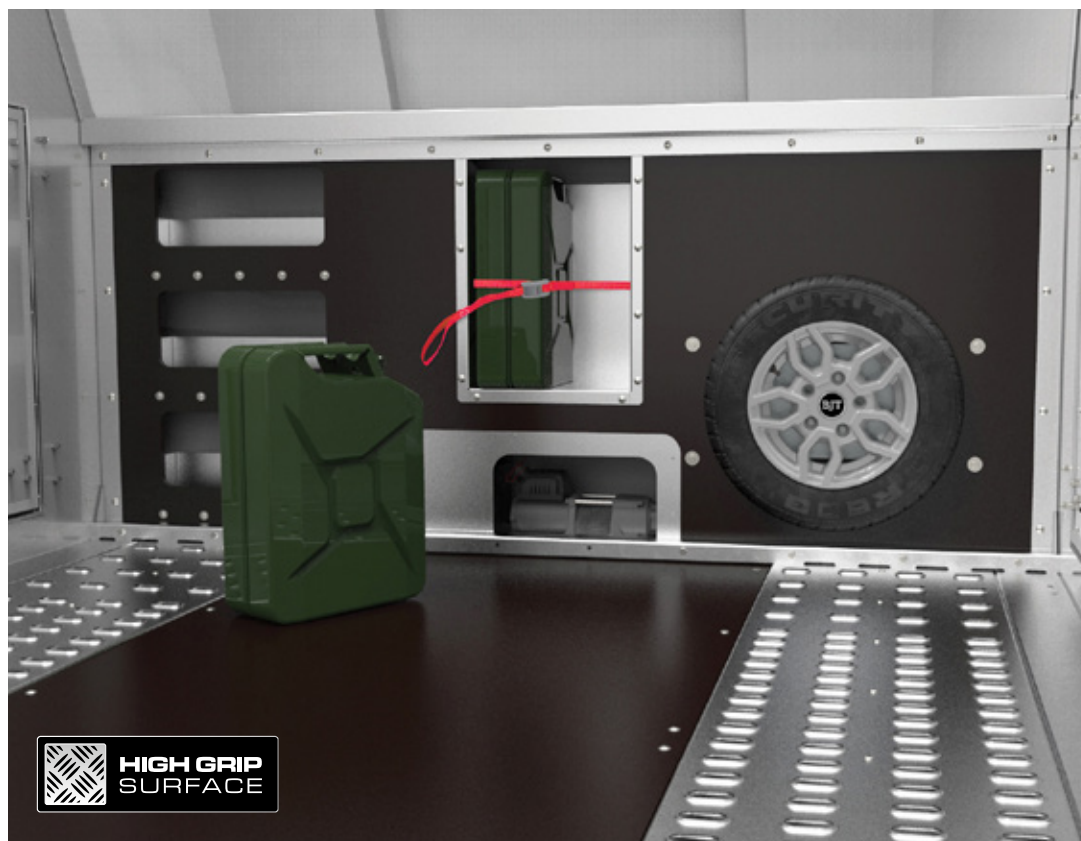
#### ● Built-in assister ramps

Aluminium fold out ramps at the base of each door, offer a low loading angle. Powerful magnets retain the ramps in their travelling position.

## OPTIONS

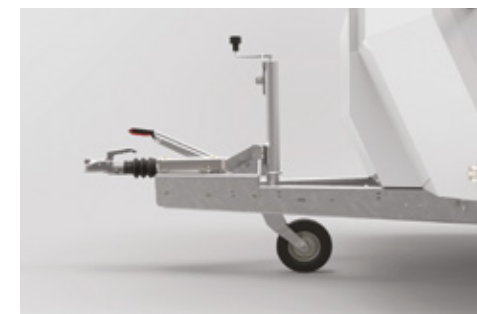
Personal and special.

Whether for race, rally, storage or professional transportation we have created a uniquely customisable trailer. Race Sport can be configured with any of the available option packs, quickly and directly at your dealer. This incredible flexibility makes it entirely possible to develop the facilities within the Race Sport as your needs change, or perhaps start off with all of the bells and whistles.



### ○ Alloy wheels

The Race Sport is also available with new style alloy wheels in standard Silver or diamond cut Anthracite.



### ○ Auto retracted jockey wheel

Strong and practical jockey wheel upgrade provides a high lift facility, improves ground clearance and avoids side clamp slip.



### ○ Electric winch, 12v with remote control

Electric winch, mounted as shown is powered by a fully fitted 12v battery pack. Full remote control is via a wander lead. Winch features free line spool and roller guides. Mains charger supplied.

### ○ Front storage,

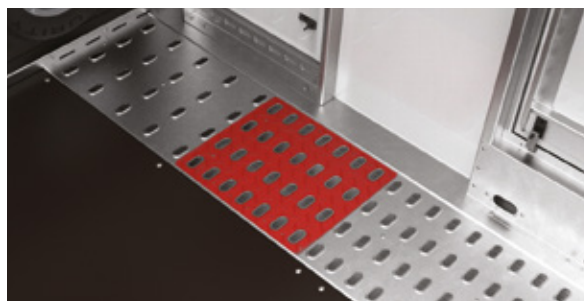
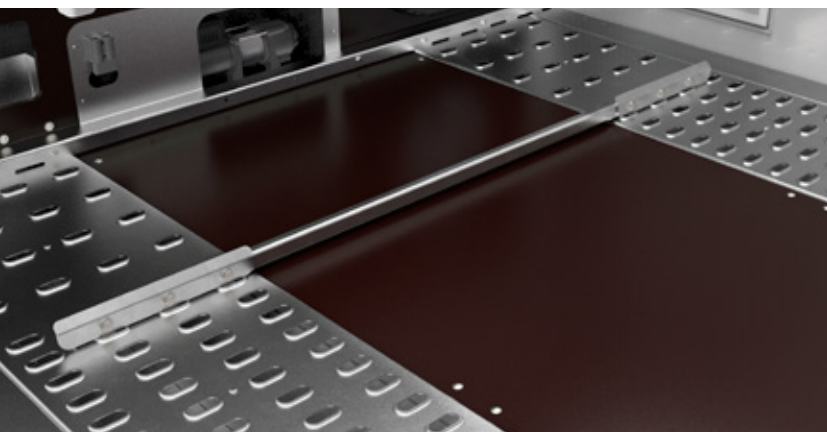
with space for two 20ltr jerry cans and three storage shelves.

### ○ Aluminium side storage

racks, on left and right hand side, each having 3 shelves for storage of smaller items. 600mm wide x 76mm deep.







**○ Wheel chock,** 50mm high to suit cars with low splitters. Bolted in a fixed position.

#### ○ Deck slick pads

Cars with soft compound or 'slick' tyres, can benefit from deck slick pads placed under each tyre. This raises the tyre contact area level with the punched deck.

**Note:** Slick pads are loose, not fixed in position.

#### ○ Wheel chocks,

Fully adjustable, quick release wheel chock system engages directly into the trailer chassis and is easily adjustable in position.



#### ○ Interior LED lighting

Assists in loading operations at night by providing background night visibility. The 'Extended' interior lighting kit has 4 LED strip lamps to provide additional illumination.



#### ○ Full LED lighting

LED lights are both super bright and reliable. 8 x individual rear lamps are replaced with LED items. All other original lamps are LED technology as standard.

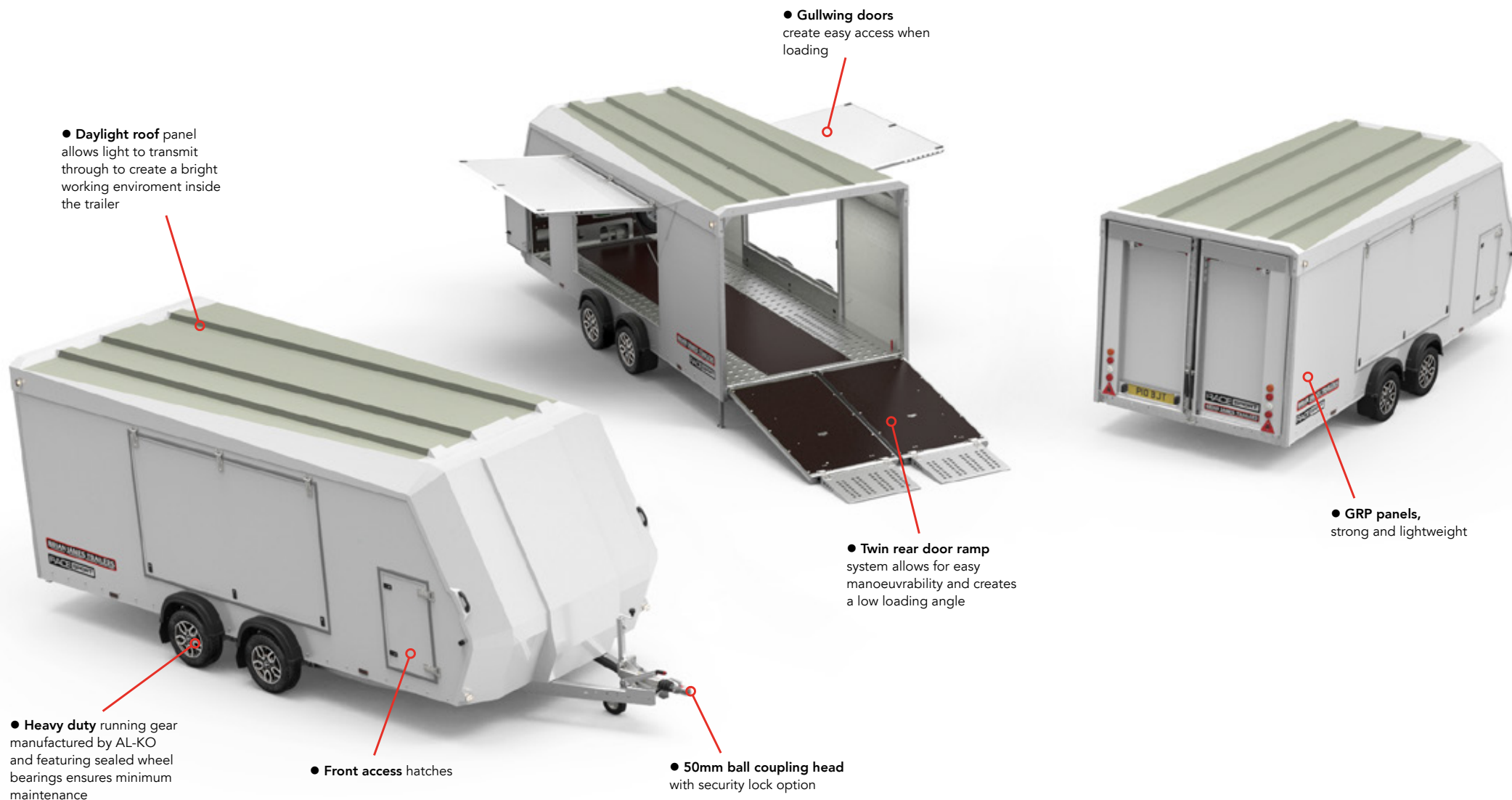
#### LED lamps: Note

LED lamps are not compatible with all towing vehicles. This may cause unintended consequences. Please check compatibility. A mix of filament and LED lamps is possible.



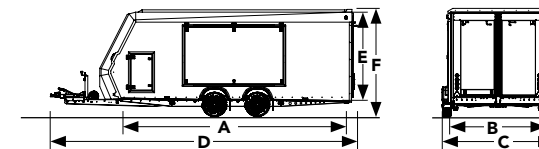
#### ○ Tyre rack

Transport of multiple spare wheels and tyres is easily accomplished with a high level tyre rack. Its design places the wheels above average bonnet height, so keeping useful space available on the bed. Safety and security of the transported spare wheels is provided for by a unique strap system.





## TECHNICAL INFORMATION.



MODEL	RACESPORT			
LOAD BED LENGTH m A	4.50	5.00		5.50
CAPACITY				
Gross kg	2,600	2,600	3,000	3,000
Load kg	1,550	1,480	1,860	1,810
Unladen trailer weight kg	1,050	1,120	1,140	1,190
DIMENSIONS				
Load bed width m B	2.00	2.00	2.00	2.10
Overall trailer width m C	2.38	2.38	2.38	2.48
Overall bed length m D	6.06	6.56	6.56	7.06
Internal height (min aperture) m	1.77	1.77	1.77	1.77
Internal height (to roof) m E	1.82	1.82	1.82	1.82
Overall trailer height m F	2.25	2.25	2.25	2.25
Tow-ball height (loaded) m	0.40	0.40	0.40	0.40
RUNNING GEAR				
Axles	2	2	2	2
Wheel / Tyre size	12" (155/70)	12" (155/70)	12" (155/70)	12" (155/70)
Spare wheel	●	●	●	●
Alloy wheels - lightweight (Style B2 Anthracite diamond cut or standard Silver) + safety locking wheel bolts	○	○	○	○
Suspension dampers x 4	○	○	○	○
LOADING				
Wheel chocks, pair (red), fully adjustable, professional system engages into trailer chassis	○	○	○	○
Wheel chock, full width fixed (bolted) 50mm high for cars with low splitters	○	○	○	○
Tyre rack	○	○	○	○
WINCH				
Electric Winch Kit, with Power	○	○	○	○
ACCESSORIES, LIGHTING				
Front storage - for 20 litre jerry can x 2 + shelves	○	○	○	○
Aluminium side storage racks	○	○	○	○
Deck Slick Pads x4	○	○	○	○
Tie-down wheel 'sleeve' straps x 4 - 4,000 DaN; strap over circumference of each vehicle tyre	○	○	○	○
Tie-down wheel 'sling' straps x 4 - 4,000 DaN	○	○	○	○
LED Lighting kit - rear lights	○	○	○	○
Interior LED light pack	○	○	○	○
Auto Retract jockey wheel	○	○	○	○
SECURITY				
Lockfast Bar	○	○	○	○
Datatag - Security identification system	○	○	○	○
Anti-Theft tracker	○	○	○	○
Wheel safety kit	○	○	○	○
Coupling head lock	○	○	○	○
WARRANTY				
5 Year chassis warranty	●	●	●	●
PRODUCTS				
Product code	340-4500	340-5000	340-5010	340-5510



## QUALITY

Brian James Trailers are manufacturers of class leading trailers, since 1979. When you buy a Brian James Trailer you can be absolutely certain that it is designed and constructed to the highest possible standards. Our Engineers combine top-quality craftsmanship with the best materials and first-class presentation. Light but strong, our trailers are crafted to enhance safety, efficiency and durability.

## 5 Year Chassis Warranty

This Brian James Trailer is provided to you with a non-transferable manufacturers warranty covering the integrity of the chassis for a period of 5 years from the date of first registration.

We warrant that under normal use, outside of accident damage or misuse (meaning driven across unsuitable territory or being overloaded) the chassis will not fatigue or fail to be able to perform its intended duties safely.

Any repair or rectification as a result of a claim under this warranty will be at Brian James Trailers cost and be carried out either at a Brian James Trailers main dealer, or at the factory HQ in Daventry, UK, at the discretion of Brian James Trailers Ltd. A repair may involve removal of the original galvanised surface finish, for which we will not be liable to reinstate to its original state.

Brian James Trailers will not be liable for any consequential loss in connection with a claim on this warranty, including recovery fees or transport to or from the place of final repair.



RACE SPORT





**BRIAN JAMES TRAILERS**

» Connected to you

## NOTES

Specifications are subject to change without notice. Illustrations and photography may depict optional equipment.

[www.brianjames.co.uk](http://www.brianjames.co.uk)

© BRIAN JAMES TRAILERS LIMITED  
Printed in the UK

Edition RACESPORT2019\_Q1\_1

**Brian James Trailers Limited.**  
Sopwith Way, Drayton Fields Industrial Estate  
Daventry, Northampton, NN11 8PB

**T + 44 (0)1327 308 833**

Brian James Trailers are available by contacting our sales team as well as through an extensive network of official dealers throughout the country.

For more information please call or visit our website.

**[www.brianjames.co.uk](http://www.brianjames.co.uk)**

Dealer information.

